



WILDFIRE RAID

LAKE MANCHESTER
1ST MARCH, 2025

1 : 20,000 5m Contours, Indexed at 25m

0 500 1,000 m

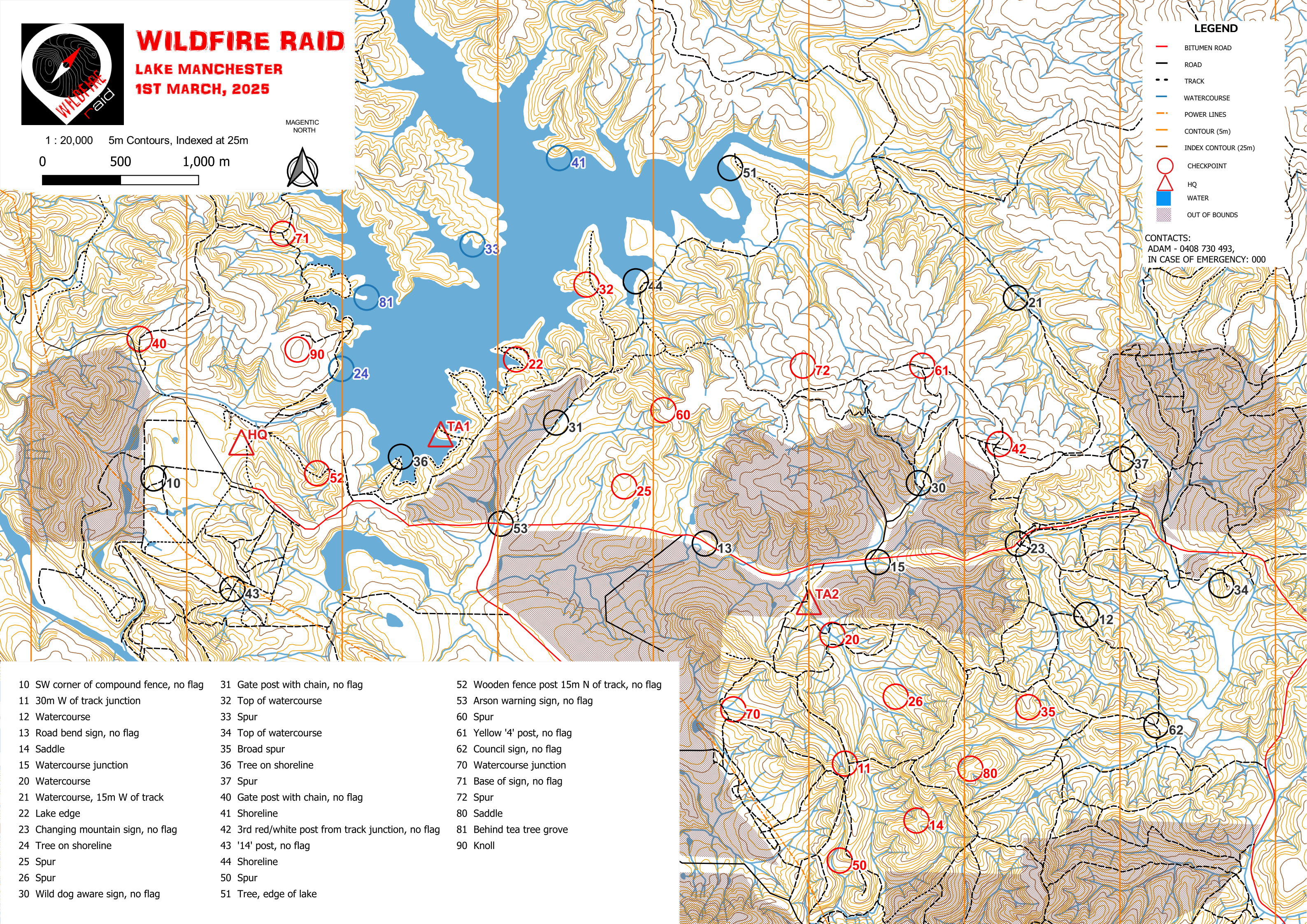
MAGNETIC NORTH



LEGEND

- BITUMEN ROAD
- ROAD
- TRACK
- WATERCOURSE
- POWER LINES
- CONTOUR (5m)
- INDEX CONTOUR (25m)
- CHECKPOINT
- HQ
- WATER
- OUT OF BOUNDS

CONTACTS:
ADAM - 0408 730 493,
IN CASE OF EMERGENCY: 000



- | | | |
|---|--|--|
| 10 SW corner of compound fence, no flag | 31 Gate post with chain, no flag | 52 Wooden fence post 15m N of track, no flag |
| 11 30m W of track junction | 32 Top of watercourse | 53 Arson warning sign, no flag |
| 12 Watercourse | 33 Spur | 60 Spur |
| 13 Road bend sign, no flag | 34 Top of watercourse | 61 Yellow '4' post, no flag |
| 14 Saddle | 35 Broad spur | 62 Council sign, no flag |
| 15 Watercourse junction | 36 Tree on shoreline | 70 Watercourse junction |
| 20 Watercourse | 37 Spur | 71 Base of sign, no flag |
| 21 Watercourse, 15m W of track | 40 Gate post with chain, no flag | 72 Spur |
| 22 Lake edge | 41 Shoreline | 80 Saddle |
| 23 Changing mountain sign, no flag | 42 3rd red/white post from track junction, no flag | 81 Behind tea tree grove |
| 24 Tree on shoreline | 43 '14' post, no flag | 90 Knoll |
| 25 Spur | 44 Shoreline | |
| 26 Spur | 50 Spur | |
| 30 Wild dog aware sign, no flag | 51 Tree, edge of lake | |

