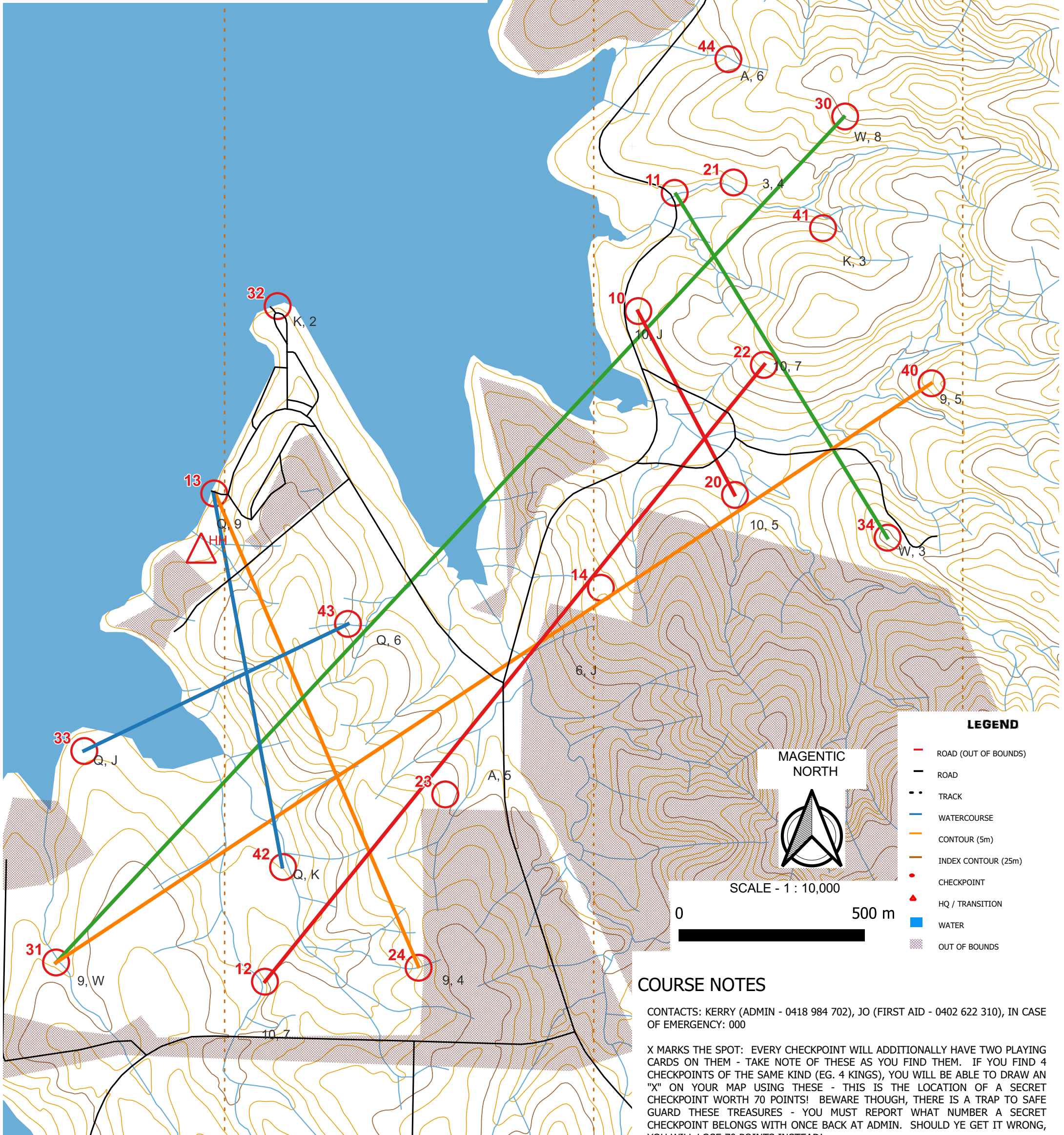




Lake Moogerah TREK

27th May, 2023

#	Description (* No Flag)	CARD 1	CARD 2	#	Description (* No Flag)	CARD 1	CARD 2
10	* Power pole			30	Spur		
11	Stormwater pipe, E end			31	Watercourse		
12	Watercourse			32	* Tree closest to boat ramp		
13	* Lake map sign			33	25m from water		
14	Spur			34	Knoll		
20	Tree, 10m from watercourse			40	Spur		
21	Edge of watercourse			41	Edge of scrub pocket		
22	Fallen tree			42	Watercourse junction		
23	South side of spur			43	Top of watercourse		
24	* Fence			44	Watercourse		



COURSE NOTES

CONTACTS: KERRY (ADMIN - 0418 984 702), JO (FIRST AID - 0402 622 310), IN CASE OF EMERGENCY: 000

X MARKS THE SPOT: EVERY CHECKPOINT WILL ADDITIONALLY HAVE TWO PLAYING CARDS ON THEM - TAKE NOTE OF THESE AS YOU FIND THEM. IF YOU FIND 4 CHECKPOINTS OF THE SAME KIND (EG. 4 KINGS), YOU WILL BE ABLE TO DRAW AN "X" ON YOUR MAP USING THESE - THIS IS THE LOCATION OF A SECRET CHECKPOINT WORTH 70 POINTS! BEWARE THOUGH, THERE IS A TRAP TO SAFE GUARD THESE TREASURES - YOU MUST REPORT WHAT NUMBER A SECRET CHECKPOINT BELONGS WITH ONCE BACK AT ADMIN. SHOULD YE GET IT WRONG, YOU WILL LOSE 70 POINTS INSTEAD!

ALL OF THESE SECRET CHECKPOINTS ARE LOCATED ON WATERCOURSES, AND WILL BE A LITTLE MORE DIFFICULT TO FIND (YOU MAY NEED TO BE WITHIN A FEW METRES IN SOME CASES DEPENDING ON THE DIRECTION OF APPROACH).

COMPETITORS SHOULD EXERCISE CAUTION WHILE ON COURSE. WE HAVE KINDLY BEEN GIVEN PERMISSION BY THE NEIGHBORING LAND OWNERS, PLEASE SHOW RESPECT WHILST ON THEIR PROPERTY. YOU SHOULD NOT NEED TO CLIMB OVER OR THROUGH FENCING - IT IS PROBABLY A SIGN YOU ARE GOING OUT-OF-BOUNDS. THERE ARE NO ROAD CLOSURES, SO PLEASE STAY OFF THE ROADS IF VEHICLES ARE NEARBY.