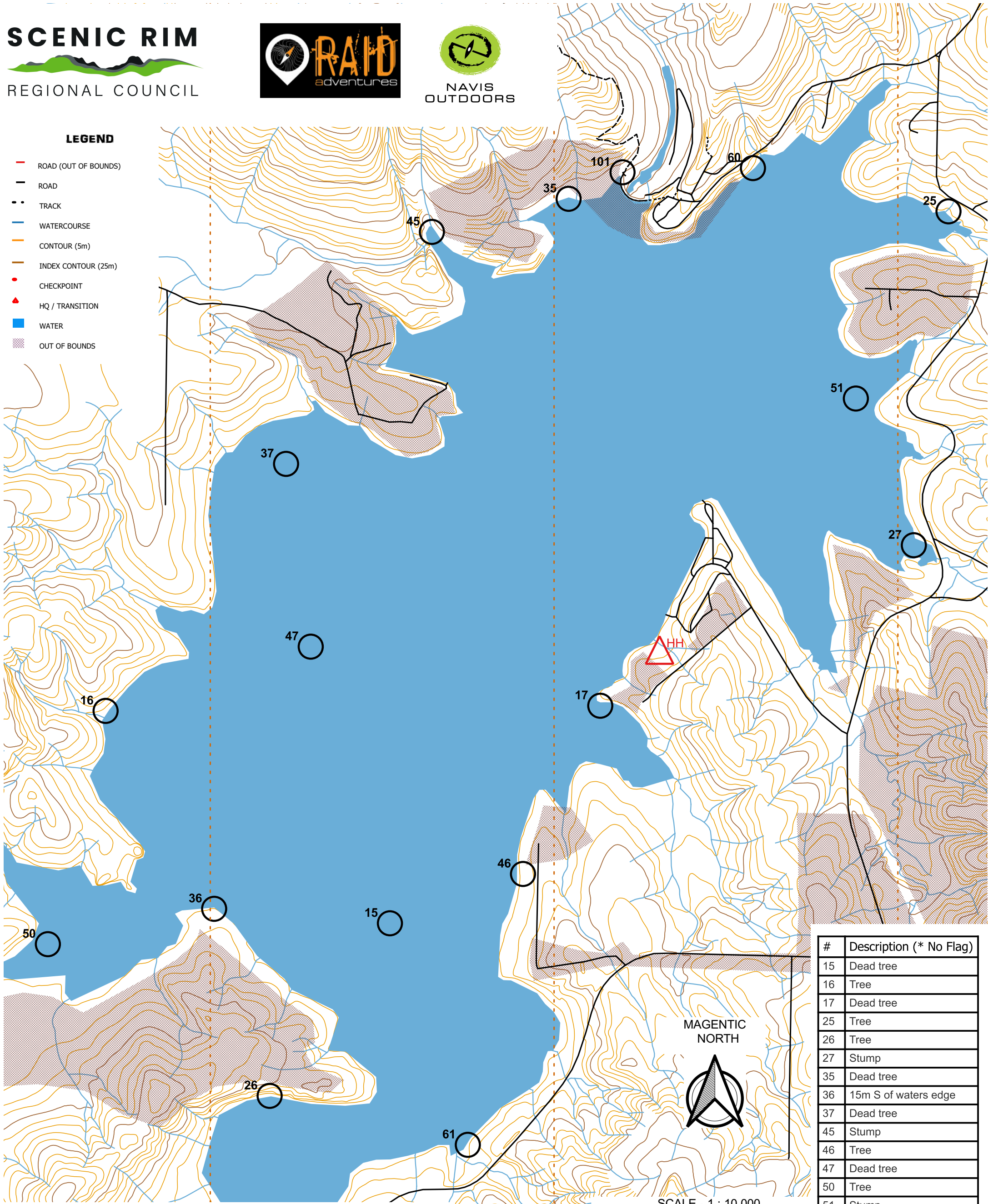


LEGEND

- ROAD (OUT OF BOUNDS)
- ROAD
- - - TRACK
- WATERCOURSE
- CONTOUR (5m)
- INDEX CONTOUR (25m)
- CHECKPOINT
- ▲ HQ / TRANSITION
- WATER
- OUT OF BOUNDS



#	Description (* No Flag)
15	Dead tree
16	Tree
17	Dead tree
25	Tree
26	Tree
27	Stump
35	Dead tree
36	15m S of waters edge
37	Dead tree
45	Stump
46	Tree
47	Dead tree
50	Tree
51	Stump
60	Tree
61	Tree
101	* End of fence, w side

MAGENTIC NORTH



SCALE - 1 : 10,000

0 500 m



Lake Moogerah

KAYAK

27th May, 2023

COURSE NOTES

CONTACTS: KERRY (ADMIN - 0418 984 702), JO (FIRST AID - 0402 622 310), IN CASE OF EMERGENCY: 000

BEWARE OF BOATING TRAFFIC. PARTICULARLY BETWEEN CP37 AND CP45, AND IN THE VICINITY OF HH

