

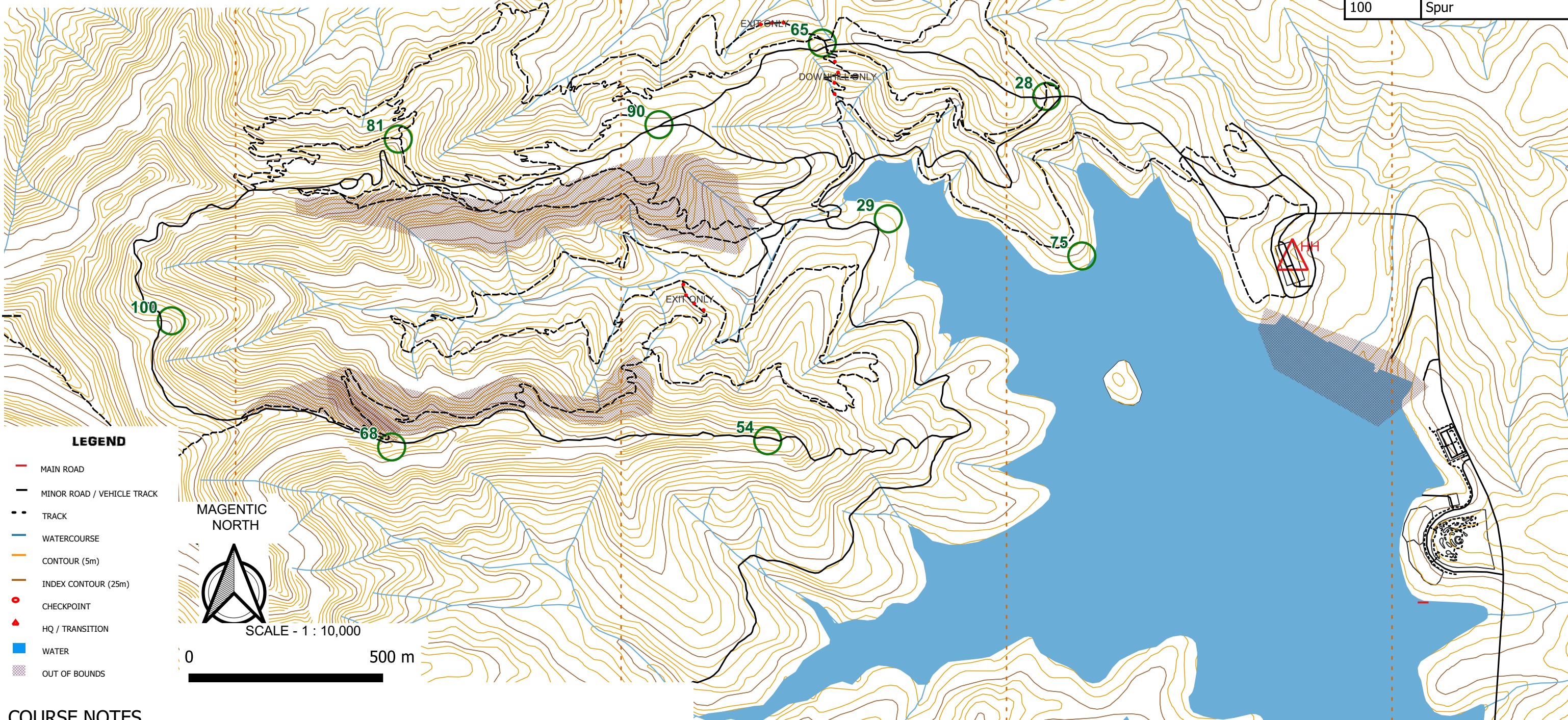


Mt Joyce

BIKE A

28th May, 2023

Checkpoint	Description (* No Flag)
28	* 'Tunnel Vision' sign
29	Broad spur
54	10m S of track
65	* Post, bent gate
68	15m S of track
75	15m from water edge
81	* 'Tuna Chunks' sign
90	* 'N6' sign
100	Spur



COURSE NOTES

CONTACTS: KERRY (ADMIN - 0418 984 702), JO (FIRST AID - 0402 622 310), IN CASE OF EMERGENCY: 000

YOU CAN START ON EITHER MAP BIKE 'A' OR BIKE 'B'. HOWEVER, IF YOU PLAN TO DO BOTH, YOU CAN ONLY DO SO BY RETURNING TO HASH HOUSE BETWEEN 11AM - 12PM TO CHANGE OVER (YOU MUST PUNCH A TRANSITION PUNCH TO DO THIS). YOU CANNOT COLLECT CHECKPOINTS FROM 'A' WHILST ON 'B', AND VISA VERSA.

YOU MUST BE WITHIN 100M OF YOUR BIKE AT ALL TIMES.

COMPETITORS SHOULD EXERCISE CAUTION WHILE ON COURSE. MT JOYCE IS PUBLIC ACCESS AND USED BY RECREATIONAL BIKE RIDERS, WALKERS AND HORSE RIDERS - COMPETITORS SHOULD SLOW DOWN AND RESPECT OTHER USERS. SOME OF THE TRAILS ARE TECHNICAL IN NATURE, AND RIDERS SHOULD DISMOUNT AND WALK THEIR BIKES IF IN DOUBT TO AVOID ANY ACCIDENTS.

