

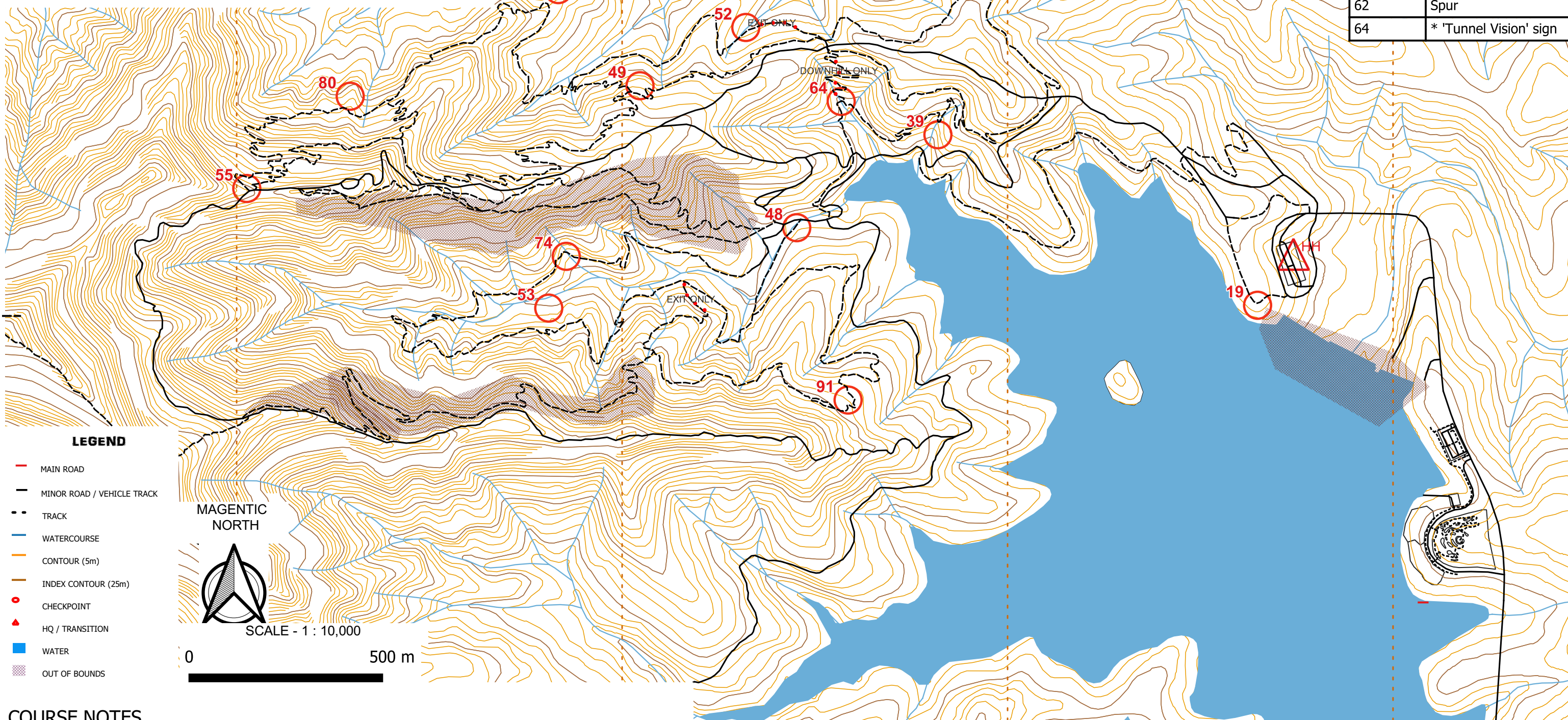


# Mt Joyce

## BIKE B

28th May, 2023

Checkpoint	Description (* No Flag)
19	* Seat
38	Spur
39	20m S of track
48	* Trail sign
49	20m NE track junction
52	Watercourse
53	40m N of switchbacks
55	* 'Bovine Groove' sign
62	Spur
64	* 'Tunnel Vision' sign



### COURSE NOTES

CONTACTS: KERRY (ADMIN - 0418 984 702), JO (FIRST AID - 0402 622 310), IN CASE OF EMERGENCY: 000

YOU CAN START ON EITHER MAP BIKE 'A' OR BIKE 'B'. HOWEVER, IF YOU PLAN TO DO BOTH, YOU CAN ONLY DO SO BY RETURNING TO HASH HOUSE BETWEEN 11AM - 12PM TO CHANGE OVER (YOU MUST PUNCH A TRANSITION PUNCH TO DO THIS). YOU CANNOT COLLECT CHECKPOINTS FROM 'A' WHILST ON 'B', AND VISA VERSA.

YOU MUST BE WITHIN 100M OF YOUR BIKE AT ALL TIMES.

COMPETITORS SHOULD EXERCISE CAUTION WHILE ON COURSE. MT JOYCE IS PUBLIC ACCESS AND USED BY RECREATIONAL BIKE RIDERS, WALKERS AND HORSE RIDERS - COMPETITORS SHOULD SLOW DOWN AND RESPECT OTHER USERS. SOME OF THE TRAILS ARE TECHNICAL IN NATURE, AND RIDERS SHOULD DISMOUNT AND WALK THEIR BIKES IF IN DOUBT TO AVOID ANY ACCIDENTS.

