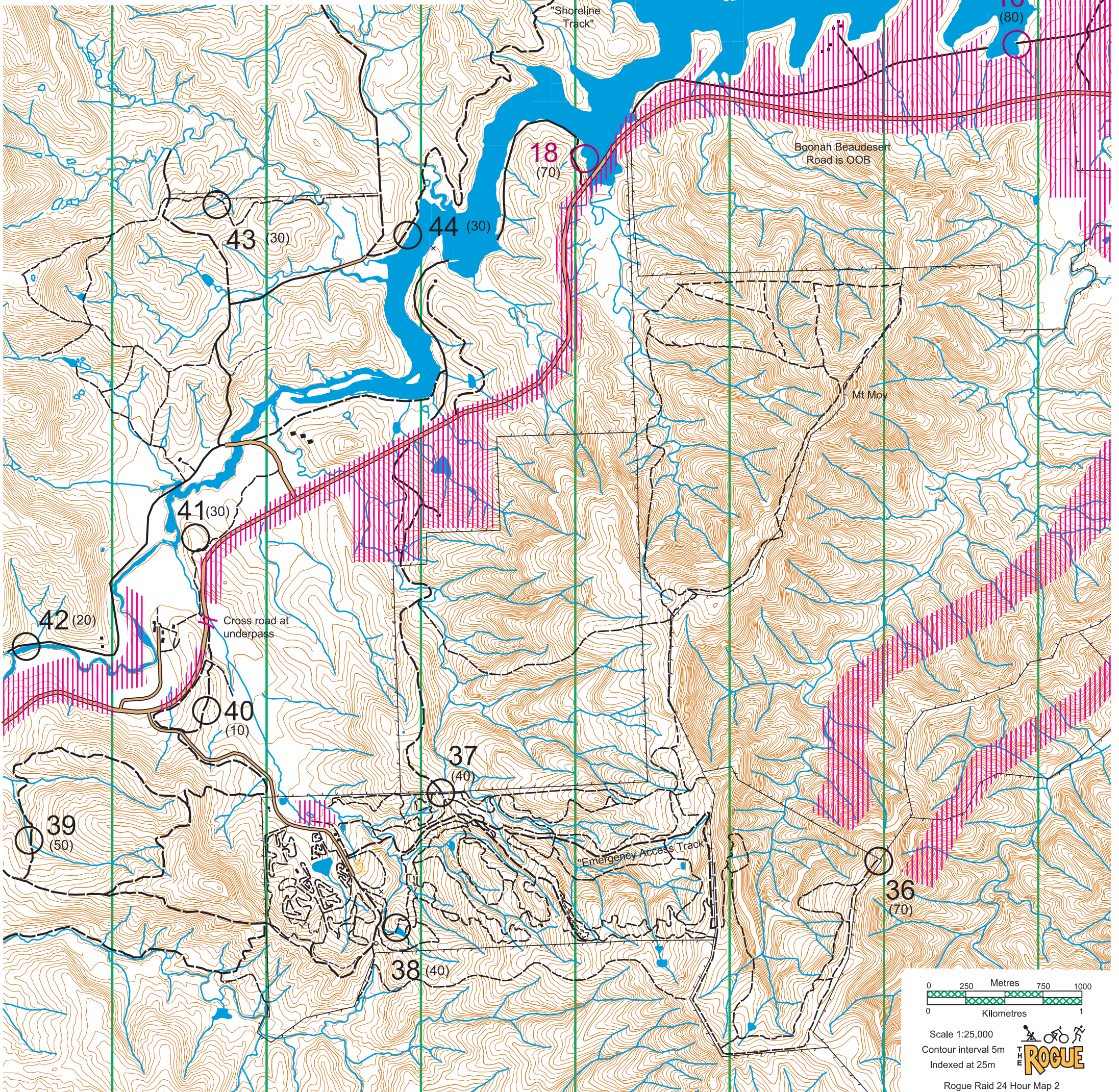
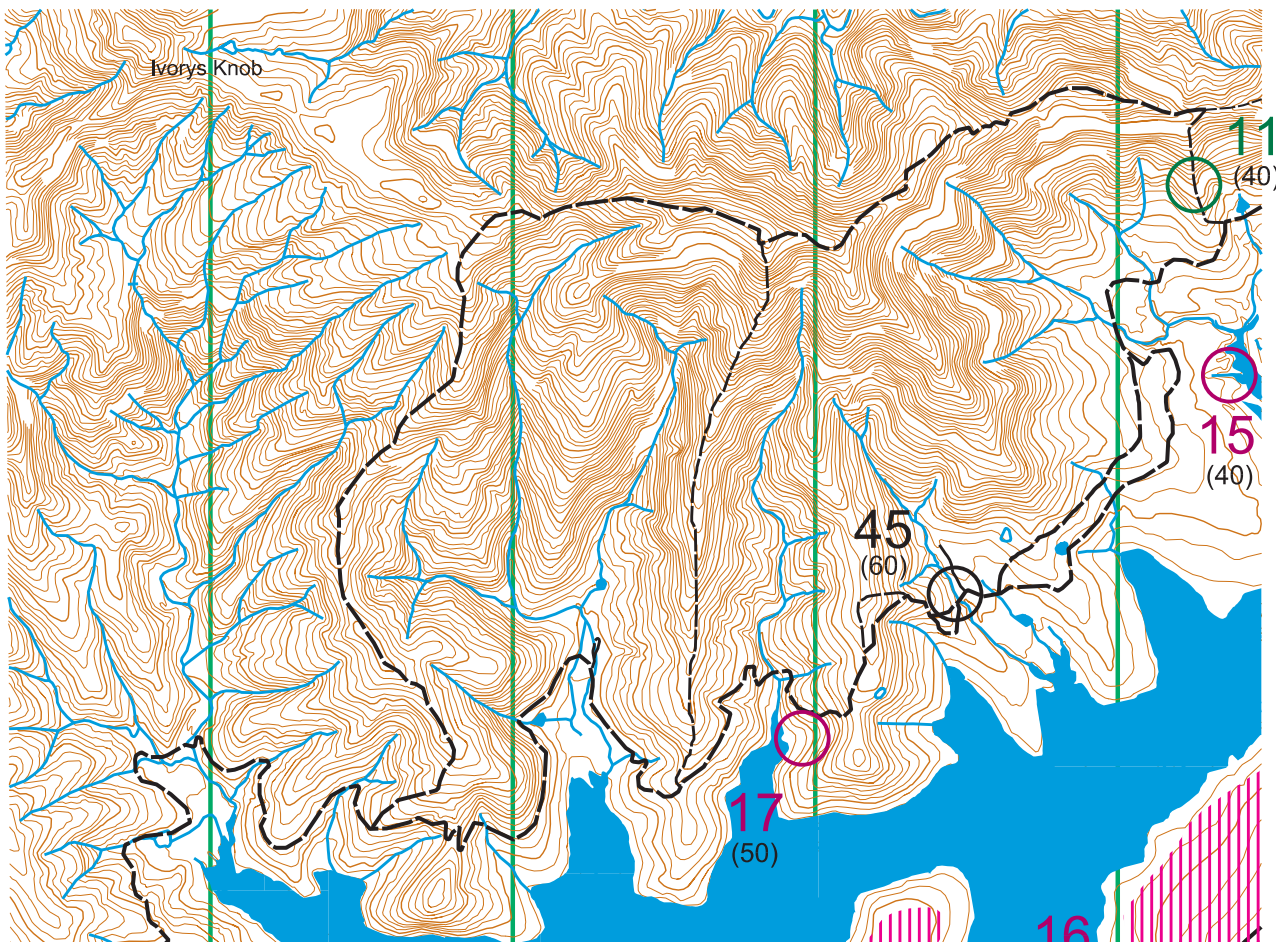


- 1 - 20m NW of old track, 15m SE of Teviot Brook
- 2 - Spur
- 3 - Edge of water
- 4 - A watercourse
- 5 - Small scungy spur
- 6 - Old track / broad watercourse crossing
- 7 - Spur
- 8 - Watercourse
- 9 - Knoll
- 10 - Spur
- 11 - Edge of track
- 12 - Edge of track
- 13 - Edge of water
- 14 - Watercourse. Caution: submerged obstructions
- 15 - Watercourse. Caution: submerged obstructions
- 16 - South side of road
- 17 - Gully at edge of clearing
- 18 - Silo
- 19 - Below top of rocky outcrop
- 20 - High point
- 21 - Small dam
- 22 - A spur
- 23 - Watercourse junction
- 24 - Watercourse
- 25 - Watercourse
- 26 - Inside sandy watercourse
- 27 - Rocky spur
- 28 - SE side of small dam
- 29 - Spur
- 30 - North edge of high point
- 31 - Spur
- 32 - Spur
- 33 - Fence corner

- 34 - Knoll
- 35 - Fence junction
- 36 - Knoll / end of track
- 37 - Gate at track junction
- 38 - Track bend overlooking dam
- 39 - Watercourse 20m west of track
- 40 - Edge of track
- 41 - Spur
- 42 - Tree overhanging water
- 43 - Watercourse
- 44 - Edge of water
- 45 - Watercourse. 20m NE of track
- 46 - Edge of small dam
- 47 - Spur
- 48 - Inside watercourse (steep sides)
- 49 - Spur
- 50 - Spur
- 51 - 10m west of singletrack bend
- 52 - High point of island
- 53 - Edge of water
- 54 - Ridgeline on island
- 55 - Ridgeline
- 56 - Fenceline at top of spur
- 57 - Edge of water
- 58 - Edge of water
- 59 - 50m west of clearing/track junction
- 60 - Spur
- 61 - Watercourse junction
- 62 - Watercourse
- 63 - Spur
- 64 - Edge of track
- 65 - Spur



0 250 Metres 750 1000
0 Kilometres 1

Scale 1:25,000
Contour interval 5m
Indexed at 25m

THE ROGUE

Rogue Raid 24 Hour Map 2