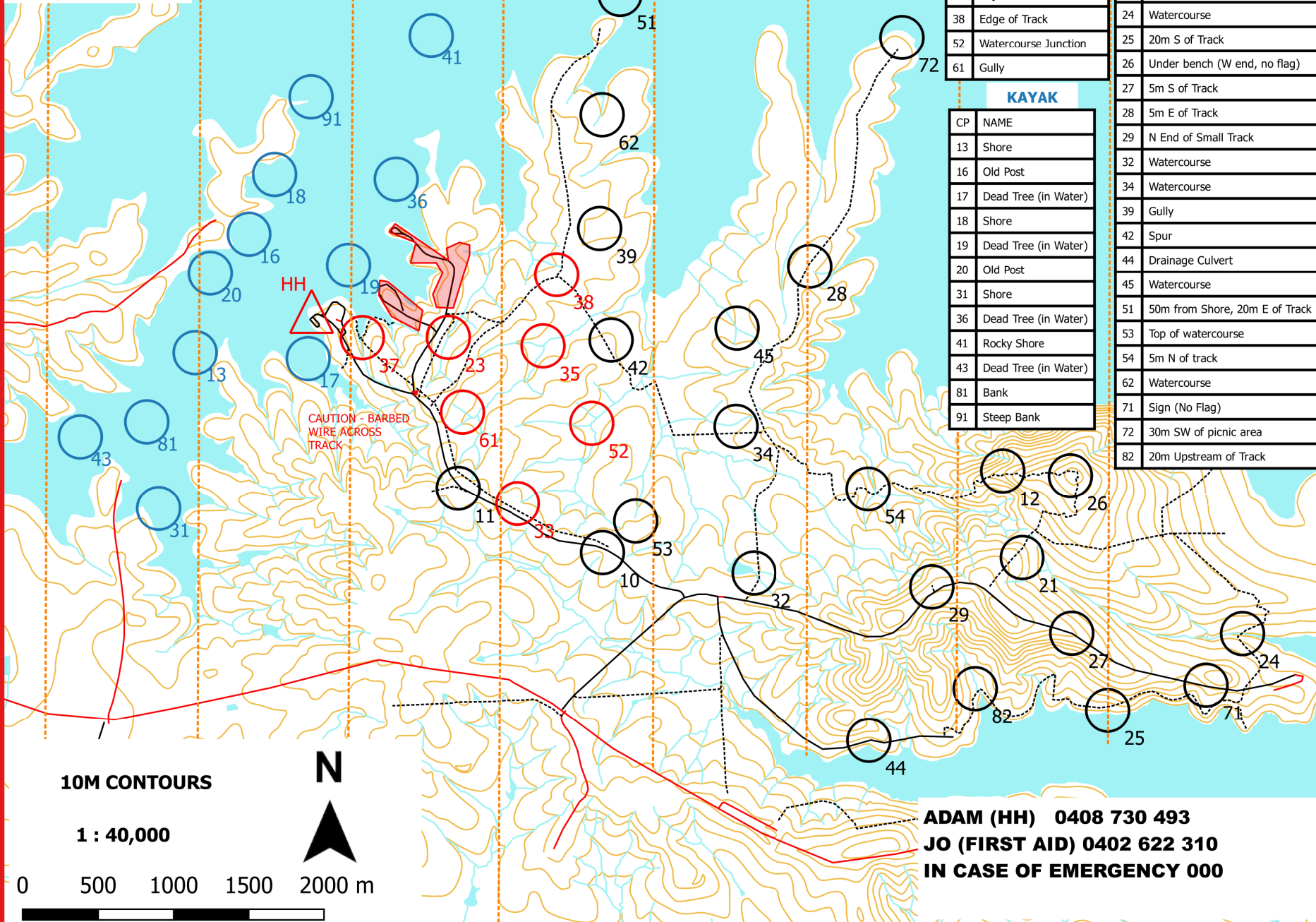


Logan's Inlet,
17th April, 2021



10M CONTOURS

1 : 40,000

0 500 1000 1500 2000 m



TREK

CP	NAME
23	15m East of Road
33	Top of Watercourse
35	Watercourse Junction
37	Adjacent to Watercourse
38	Edge of Track
52	Watercourse Junction
61	Gully

KAYAK

CP	NAME
13	Shore
16	Old Post
17	Dead Tree (in Water)
18	Shore
19	Dead Tree (in Water)
20	Old Post
31	Shore
36	Dead Tree (in Water)
41	Rocky Shore
43	Dead Tree (in Water)
81	Bank
91	Steep Bank

BIKE/TREK/KAYAK

CP	NAME
10	Gully Head (Fence)
11	Fence
12	Unmapped Spur, North of Track
21	15m SE Track
24	Watercourse
25	20m S of Track
26	Under bench (W end, no flag)
27	5m S of Track
28	5m E of Track
29	N End of Small Track
32	Watercourse
34	Watercourse
39	Gully
42	Spur
44	Drainage Culvert
45	Watercourse
51	50m from Shore, 20m E of Track
53	Top of watercourse
54	5m N of track
62	Watercourse
71	Sign (No Flag)
72	30m SW of picnic area
82	20m Upstream of Track

6 HOUR

CHECKPOINT VALUES ARE ROUNDED DOWN TO NEAREST 10 (IE. CP45=40 POINTS, 14=10 ETC)

EVENT START: 9.00AM (ALL TEAMS BEGIN TREKKING FROM HH)

EVENT FINISH: 3.00PM (MINUS 10 POINTS PER MINUTE LATE HEREAFTER)

COURSE CLOSURE: 3:30PM (ALL POINTS ARE LOST)

ALL 6 HOUR TEAMS MUST BEGIN TREKKING AT HH

YOU MUST ADVISE HH WHEN YOU COLLECT YOUR WRIST BANDS (PRIOR TO THE START) WHEN YOU WOULD PREFER TO KAYAK (AFTER TREK OR AFTER BIKE). TEAMS WILL BE ALLOCATED THEIR PREFERENCES DEPENDING ON HOW SOON THEY FINISH THE STAGE 1 TREK AND RETURN TO HH

RED CHECKPOINTS - TREKKING ONLY:
- CAN ONLY BE COLLECTED ON FOOT HAVING STARTED AT HH AND FINISHED AT HH.

- IF YOU TRANSITION TO BIKE OR KAYAK, YOU MUST PUNCH THE TRANSITION PUNCH AT HH FIRST (IE. YOU CANNOT USE YOUR BIKE OR KAYAK TO GET CLOSER TO RED CHECKPOINTS)

- THERE IS NO REASON TO ENTER THE 2 CAMPGROUND AREAS MARKED OUT-OF-BOUNDS, PLEASE AVOID

BLUE CHECKPOINTS - KAYAK ONLY:

- START / FINISH THIS STAGE AT HH

- IF YOU TRANSITION TO BIKE, YOU MUST PUNCH CP30 (WILL BE CARRIED BY AN OFFICIAL AT THE KAYAK TRAILER, AND MAY ONLY BE PUNCHED AFTER YOUR KAYAK HAS BEEN CARRIED AND/OR LOADED ONTO THE TRAILER AS THEY DIRECT)

- WATER LEVELS AS SHOWN ON MAP ARE AT 80%, WHILST CURRENT LEVELS ARE ACTUALLY 37%. HENCE, SHORELINE WILL NOT BE AS SHOWN ON THE MAP.

BLACK CHECKPOINTS - COLLECT ANYTIME ON ANY STAGE (BIKE, TREK OR KAYAK):

- BIKES LEFT ANYWHERE ON THE COURSE ARE DONE SO AT YOUR OWN RISK

ADAM (HH) 0408 730 493
JO (FIRST AID) 0402 622 310
IN CASE OF EMERGENCY 000

